

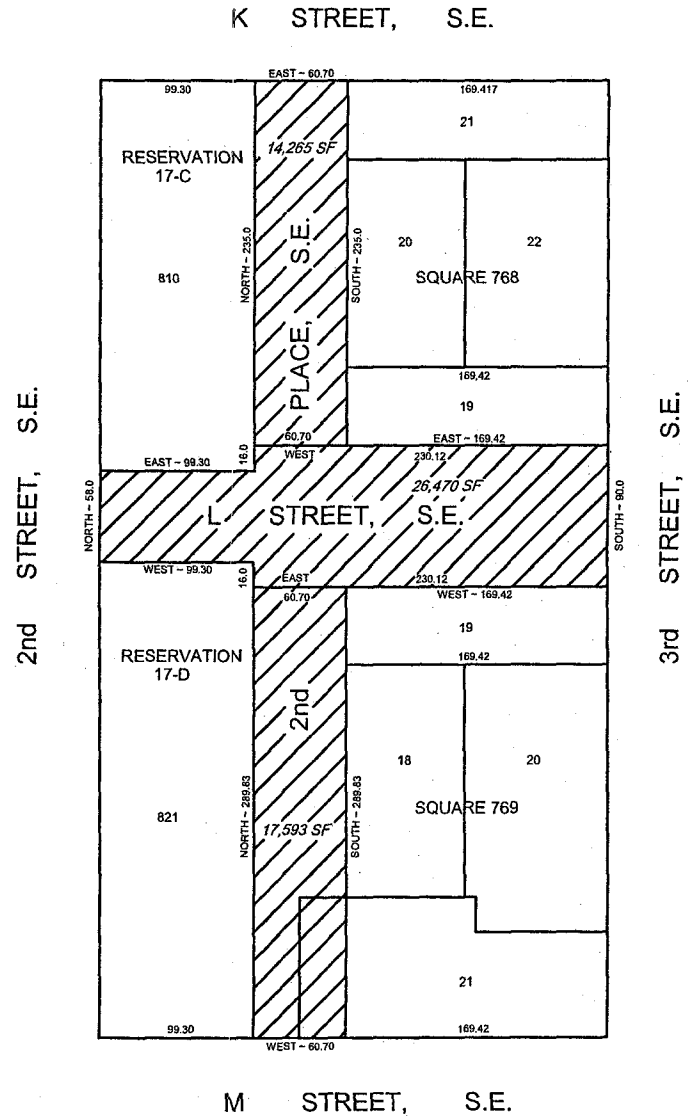
# LAND DEDICATION FOR PUBLIC STREETS RESERVATION 17-C, 17-D AND SQUARES 768 AND 769

THE LAND SHOWN THUS: IS DEDICATED FOR PUBLIC STREETS.

OFFICE OF THE SURVEYOR, D.C.  
\_\_\_\_\_, 2005

I CERTIFY THAT THIS PLAT IS CORRECT AND IS RECORDED,

\_\_\_\_\_  
SURVEYOR, D.C.



**SURVEYOR'S OFFICE, D.C.**

Made for: HOLLAND & KNIGHT  
 Drawn by: L.E.S. Checked by: \_\_\_\_\_  
 Record and computations by: F. SLEEM  
 Recorded at: \_\_\_\_\_  
 Recorded in Book \_\_\_\_\_ Page \_\_\_\_\_ S.O. 13717  
 Scale: 1 inch = 50 feet File No. 04-12080  
 SHEET 2 OF 4